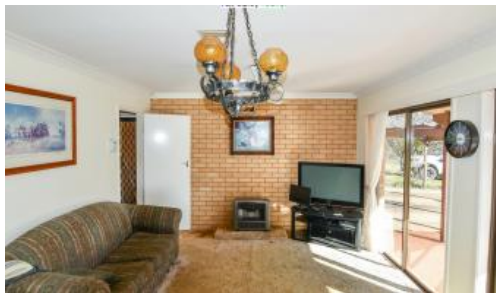


Sold



26 Cunninghams Lane, Inverell



LAIDBACK LIFESTYLE

Delightful natural surroundings enhance this 3 bedroom brick home, situated on a large 9,671sqm (2.38ac) block. An abundance of fresh air, open space and a highly sought-after lifestyle make this an idyllic location for families, 5 minutes from all the conveniences of Inverell.

Flooded with natural light, this lounge room is where you can gather together and relax, while looking out to your unspoilt, natural setting of established, native trees.

Timber, eat-in kitchen is complete with ample storage and bench space.

Ducted reverse cycle air conditioning throughout and gas points will keep this home a comfortable temperature.

3 bedrooms with built-in robes, plus an office for working from home or for the kids to do their homework.

Large bathroom has been updated with modern finishes and comprises of shower, vanity, and toilet. Adjoining laundry opens directly to your drying area.

In Summer, you will want to spend your time outdoors in your covered entertainment area and in-ground salt water swimming pool.

This home has parking and storage aplenty with an attached double garage, 16m x 10m powered shed as well as a garden shed.

Connected to town water and rainwater tanks.

For the bushwalkers, Goonoowigal Nature Reserve is located close by and is

3 1 5 9,671 m2

Price SOLD for \$450,000

Property Type Residential

Property ID 710

Land Area 9,671 m2

Agent Details

Amanda Green - 0427 211 379

Wally Duff - 0427 546 146

Office Details

RDR Real Estate

24 Otho St Inverell, NSW, 2360

Australia

02 6722 5500



the perfect way to unwind at the end of the week.

This home is peaceful semi-rural living at its best.

The above information provided has been furnished to us by the vendor/s. We have not verified whether or not that information is accurate and do not have any belief in one way or the other in its accuracy. We do not accept any responsibility to any person for its accuracy and do no more than pass it on. All interested parties should make and rely upon their own inquiries in order to determine whether or not this information is in fact accurate.